

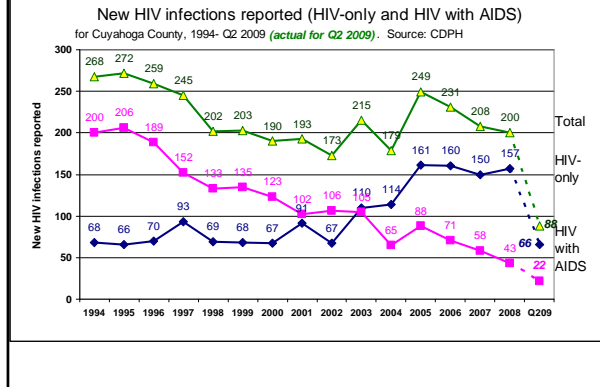
HIV/AIDS in Cuyahoga County: An interim report as of Q2 2009

Presented to the Regional AIDS Group
September 10, 2009

David Bruckman, MS, MT(ASCP)
Chief Systems Analyst, Office of Biostatistics, City of Cleveland
Department of Public Health
Adjunct Lecturer, Department of Epidemiology and Biostatistics,
Case Western Reserve University School of Medicine

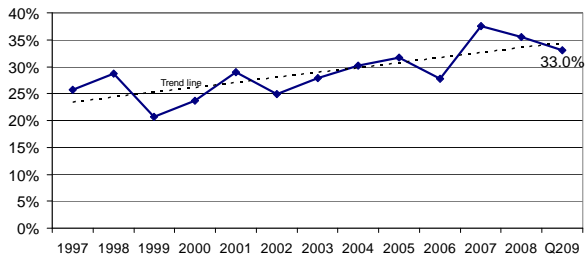


I. Overall decreasing incidence

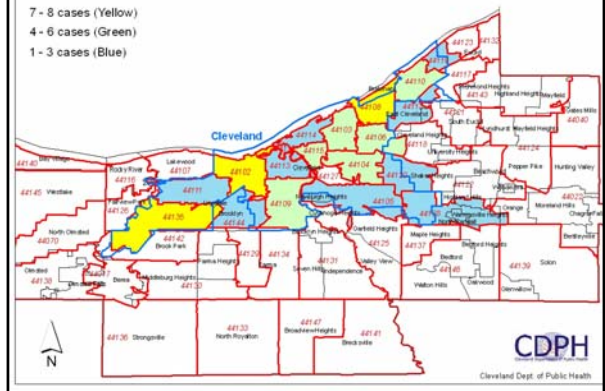


2. More cases from municipalities

Percent of new HIV and AIDS diagnoses from Cuyahoga County municipalities other than Cleveland, 1997-Q2 2009

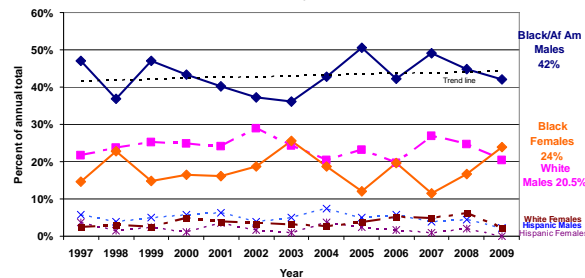


HIV/AIDS incident cases in Cuyahoga County during Q1-Q2 2009, by zip code



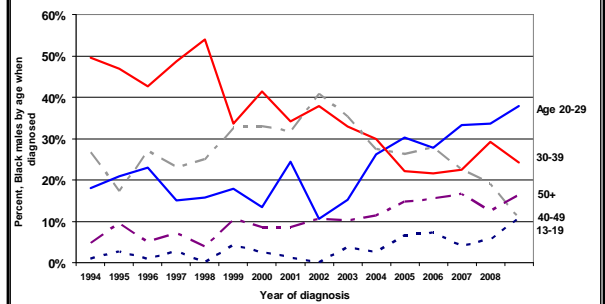
3. Increasing incidence among BF

Incident (new) infections of HIV and AIDS reported for Cuyahoga County, by Race/Ethnicity/Gender, 1997-Q2 2009
Source: Cleveland Dept of Public Health



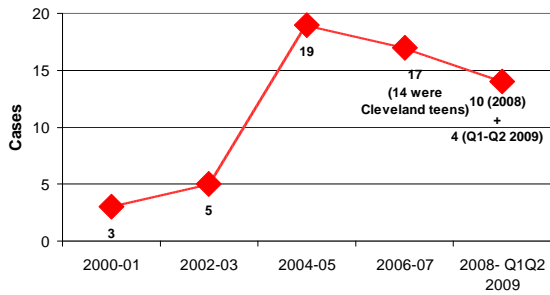
4. Age trends – Black males

Percent of Black males shown by age group when diagnosed as HIV-positive (HIV or HIV-with-AIDS) for Cuyahoga County.



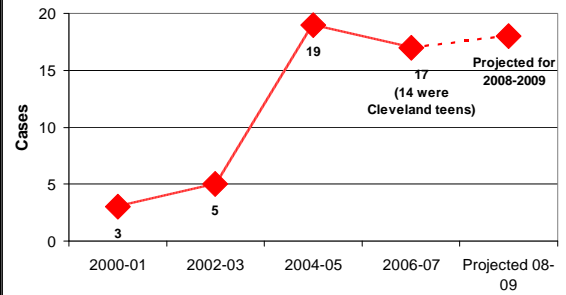
4. Age trends – teens

Incident HIV/AIDS Cases Among Teens 13-19y (age at diagnosis, Cuyahoga County)



4. Age trends – teens

Incident HIV/AIDS Cases Among Teens 13-19y (age at diagnosis, Cuyahoga County)



Syphilis

- Caused by a bacterium (spirochete)
- Highly infectious but very treatable
- Symptoms can mimic many disorders
- In Adults, left untreated:
 - Syphilis can cause dementia, neurological, cardiac and systemic damage.
 - Infertility
 - Death
- Newborns:
 - Neurological deficiencies, blindness
 - Stillbirth
 - Death

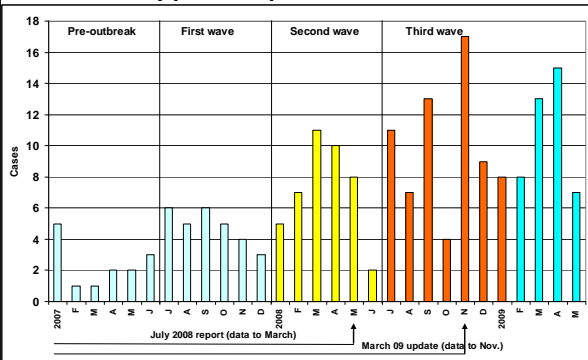


Two communities at highest risk of syphilis

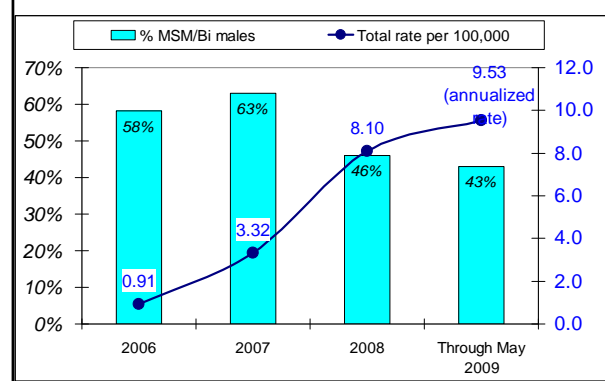
- Heterosexual males* and females
 - 90% Black/African American
- Men who have sex with men (MSM) and bisexual males
 - of all races and ethnicities.
 - In 2008-09, **half** of MSM/Bi males diagnosed with syphilis **were HIV positive**

Source: CDPH

Syphilis epidemic curve



Primary, secondary and early latent syphilis



Primary, secondary and early latent syphilis



2008-09 cases

According to case interviews with DIS agents at CDPH:

- Poor, infrequent condom use (all)
- Anonymous partners
- Overall: >90% oral sex, >30% rectal sex
 - Painless primary sore often ignored or not recognized.
- Cases as young as 14 years of age being reported.

Trends among new cases

1. Overall numbers are decreasing
2. More cases are from municipalities
 - 33-37% for 2007-Q2 2009
 - As low as 21% in 1999
3. More females, and most are Black females
 - 42% BM, 24% BF
4. Age trends
 - Black males: increasing cases among youth & 50+
 - Seventeen new cases (19%) are age +50y
 - Teens: 4 diagnosed in 2009, 10 in 2008
5. Continuing drop in IDU cases

Also, syphilis among MSM/Bi males (50% HIV+) & heterosexual males and females

CDPH is responsible for all findings presented in this report.

HIV/AIDS surveillance is conducted using the Confidential HIV/AIDS Surveillance Registry maintained by CDPH.

Syphilis data were provided by the Ohio Department of Health and analyzed by CDPH.

Contact information:
 dbruckman@city.cleveland.oh.us
 CDPH: (216) 664-4353

Thank you

